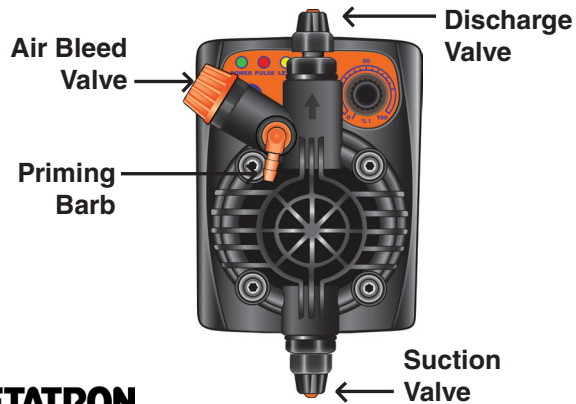


DilutionTM SOLUTIONS

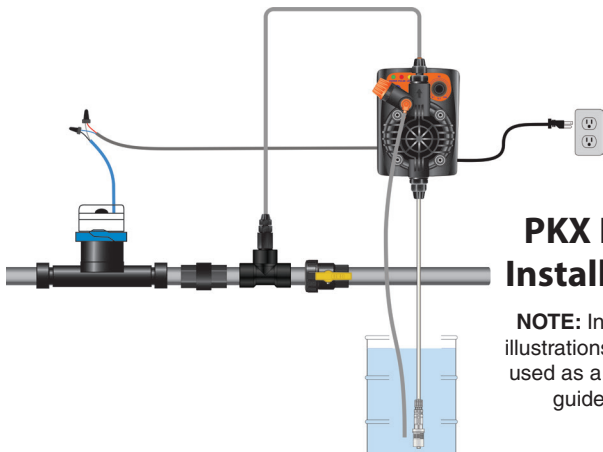
PKX FT/A Quick Start Guide

Flow Rate 0.26 GPH, Max. Pressure 72 PSI



Included in the Box

- PKX FT/A Pump
- Bracket mounting kit for wall or foot mount
- Operating instructions and maintenance manual
- Pre-wired plug with blue wire
- Reducer fitting 1/2" MPT to 3/8" FPT
- Allen Wrench (to remove solenoid head if needed)
- Contact plug for priming
- Hose packet
 - Opaque, rigid PE tubing for the discharge
 - Clear, flexible, PVC suction tube
 - Injection stem
 - Foot filter



PKX FT/A Installation

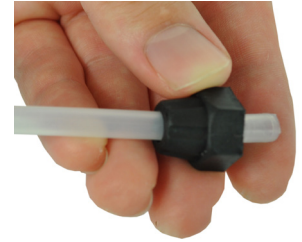
NOTE: Installation illustrations are to be used as a reference guide only.

Part A: Attaching the discharge tubing to the top stem on the solenoid

- 1 Unscrew the top discharge valve nut and remove the red protective cap.



- 2 Insert the rigid opaque tubing through the nut.



- 3 Install the hose onto the discharge barb making sure the hose is seated up to the threads.



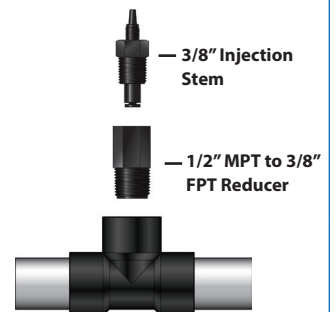
- 4 Hand tighten the discharge valve nut.



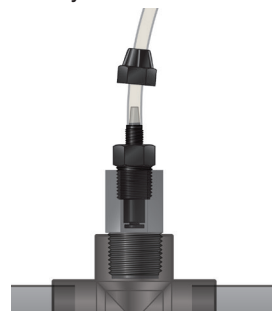
- 5 Remove the nut off of the injection stem and set aside.



- 6 Insert the injection stem into the water line as shown below. Use Teflon tape on both threaded connections.



- 7 Insert the other end of the opaque tubing through the injection stem nut, and attach the tubing to the injection valve barb, push all the way down to the threads.



- 8 Hand tighten the nut onto the top of the injection stem.



(See back for Part B and C)

PKX

Part B: Attaching the suction valve tubing

- 1** Cut the clear PVC flexible tubing into two pieces the correct size for your application.



- 2** Unscrew the suction valve nut and remove the red protective cap.



- 3** Insert the tubing through the nut.



- 4** Install the suction tube onto the barb, push all the way to the threads.



- 5** Then hand tighten the suction valve nut.



- 6** Attach the foot filter to the other end of the tubing using the same process and place vertically in the stock solution.



- 7** Attach the second piece of the clear PVC flexible tubing to the orange barb. Place the other end of tubing into stock solution.



- 8** The pump should be set to the "T" (time). In this mode 0 - 100% equals 0-60 seconds. In the "F" position, the pump will stroke 1 time per pulse from the Water Meter.



Part C: Putting the pump in operation

- 1** To begin, set frequency adjusting knob to 100%. Then, plug the pump in.



- 2** Unscrew the cover plate that reads EXT signal.



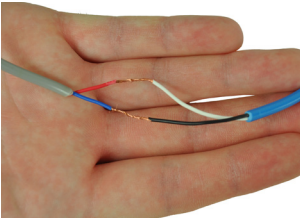
- 3** Insert the contact plug where it reads EXT signal it will prime for 60 secs. Remove plug.



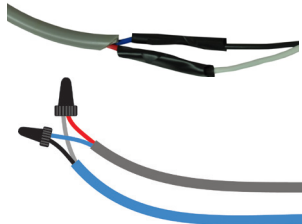
- 4** Unscrew the air bleed valve nut, the solution will begin to go down through the priming tube. Once this has finished, re-tighten the nut.



- 5** Attach the Water Meter wires to the pre-wired plug, polarity does not matter.



- 6** Wrap the wires with electrical tape or wire nuts (not provided).



- 7** Insert the plug where it reads EXT signal.



CAUTION

See operating manual for complete instructions and safety standards. When connecting a metering pump either to a public water supply or to its own water source, you must respect the regulations in force concerning protection of the source i.e. backflow prevention, etc.

NOTE: Remove safety labels before installing and remember that pumps may hold water inside.

Water Meter Options



| | |
|------------|--------------------------|
| WM34-1PPG | One pulse per gallon |
| WM34-10PPG | One pulse per 10 gallons |

NEED HELP? Call 1-800-451-6628

PKX