

CO₂ SENSOR

Product Number: 6100-0006



MAXIMUS
An Ingersoll Rand Business

Benefits of CO₂ Monitoring in Poultry Houses

Keeping a watchful eye on carbon dioxide (CO₂) concentrations in poultry houses is crucial for several reasons, all targeted towards fostering healthier, more productive birds and ensuring the safety of farm operations.

The CO₂ sensor is a tool designed to measure and maintain optimal CO₂ levels in these environments. When connected with the MAXIMUS controller, the CO₂ sensor brings a host of advantages.

Key Benefits:

1. Animal Health and Welfare

- Ensures a comfortable environment by keeping CO₂ at safe levels for both poultry and farmworkers.
- Supports high-quality livestock products by maintaining good air quality, thereby reducing respiratory problems.
- Helps monitor and adjust flock density to avoid overcrowding.

2. Ventilation Control

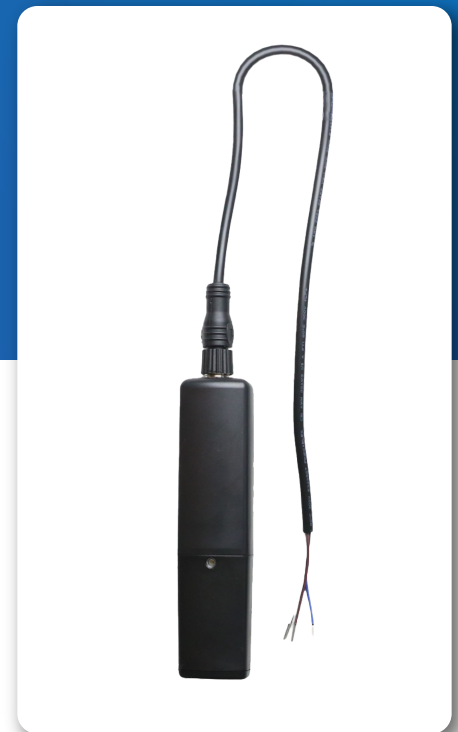
- Adjusts ventilation rates to remove harmful gasses.
- Permits energy and cost savings by allowing an optimized use of ventilation, heating and cooling.

3. Productivity and Growth

- Maintains appropriate CO₂ levels for optimal animal performance.
- Helps prevent drowsiness and decreased feed intake in birds.

4. Early Warning System

- Detects changes in CO₂ levels that may indicate equipment failures or explain behavioral changes.

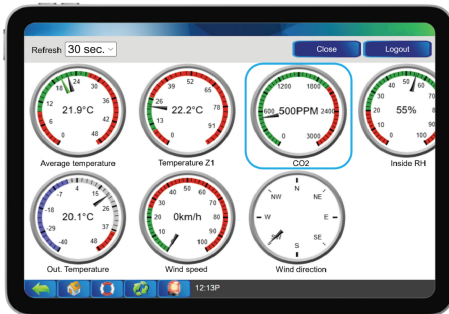


CO₂ Sensor Features

- Measures CO₂ to ensure optimal climate conditions for poultry production.
- Helps optimize the balance between ventilation and heating to maintain excellent air quality.
- Detects faults in direct combustion systems in poultry houses.
- Features a sturdy housing with filter for protection.
- Includes a connector and cable for easy disconnection and removal for house cleaning and disinfection.
- Backed by a 1-year warranty.

Remote Data Access Management

Benefit from real-time environmental monitoring to ensure optimal air quality and make the necessary adjustments with ease, no matter where you are!



CO₂ Gauge



Fluctuations in CO₂ Levels

The screenshot displays a table titled 'Viewing report CO2'. The table has four columns: 'Date', 'CO2', 'Min', and 'Max'. It shows a series of readings for the date 2025-03-26 at various times.

Date	CO2	Min	Max
2025-03-26 12:59:59	2670PPM	2500PPM	2800PPM
2025-03-26 13:59:59	2361PPM	2200PPM	2500PPM
2025-03-26 14:59:59	2455PPM	2200PPM	2700PPM
2025-03-26 15:59:59	2786PPM	2700PPM	2800PPM
2025-03-26 16:59:59	2792PPM	2700PPM	2800PPM
2025-03-26 17:59:59	2788PPM	2700PPM	2800PPM
2025-03-26 18:59:59	2762PPM	2700PPM	2800PPM
2025-03-26 19:59:59	2674PPM	2600PPM	2700PPM

CO₂ Report

Technical Specifications

Most relevant for poultry production

Two analog outputs (0-10V and 0-5V) for versatile monitoring

Protected against short-circuiting and incorrect connections

Should be centrally placed in the house for accurate readings